



Your Guide to CMap



Welcome





Table of Contents

Welcome to CMap

- Register your interest
- About Us
- Our Manchester Office

Being a Graduate at CMap

- Our Graduate routes
- Our Culture

Ready to step into your future?



Register your Interest,
using our online form





About us

About CMap

Since our launch in 2015, CMap has experienced incredible growth and success, welcoming over 500 clients, from innovative start-ups to major global enterprises.

With offices in Alderley Park, Manchester, and Orlando, we're proud to have users in more than 60 countries, working together on exciting projects around the world!

We're a vibrant team of over 120 talented individuals who are passionate about making an impact. If you're looking for a place where your ideas can shine and you can grow your career, look no further.





Our Manchester Office

As a graduate you will be based in our vibrant Manchester office, located centrally, on John Dalton Street, Manchester.

What's in Store at the Office:

- **Free Barista:** Enjoy delicious coffee made just for you, #on the house! ☕
- **Open 24/7**
- **Beer Taps:** Yes, you read that right! Grab a refreshing drink from our kitchen beer taps on the ground and 3rd floor.
Open from 3pm each day. 🍺
- **Honesty Shop:** Snack cravings? We've got you covered with an honesty shop full of goodies and drinks! 🍫🥤
- **Fun & Games:** Challenge your colleagues to a match at our table tennis and foosball tables! 🏓⚽
- **Kitchen Perks:** Enjoy a fridge stocked with drinks, and help yourself to complimentary hot drinks and water! 🧊

continues....





Our Manchester Office

- **Wellness Facilities:** We have a shower, lockers, and bike storage for your convenience! 🚲
- **Chill Out Zones:** Relax on our balconies and roof terrace, soaking up some sun! ☀️
- **Dog-Friendly:** Love dogs? So do we! Just check in with our Office Manager about bringing your furry friend along. 🐕
- **Wellness & Multifaith Room:** A space for you to recharge and reflect. 🙏



Being a GRADUATE

CMap offers two primary graduate routes:

- SDR - Sales Development Representative
- CSA - Customer Success Analyst

Testimonials



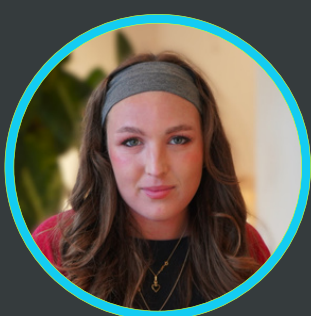
"My time at CMap has been great — I've progressed into a consultant role within 18 months, thanks to the great support I've received. The healthy & competitive performance structure is a real plus, and with such a bright future ahead, I'd definitely recommend it to anyone looking to grow their commercial career."



Michael
Inside Sales Consultant

.....

"Throughout my training, I felt fully supported, having an open & honest learning environment where no question is stupid. I was lucky to be surrounded by colleagues my age who have become mentors and friends. CMap has a very relaxed working environment, our line managers trust us to get our work done."



Grace
Customer Success Analyst



Graduate Routes - SDR

Sales Development Representative (SDR) route:

- High Bonus and Commission Package on offer (alongside base salary)
- Contacting prospects and building a sales pipeline
- Training provided on mastering 'core sales skills'
- Target based
- Ideal for high-performers and driven individuals with a 'can-do' attitude.
- New Business



Graduate Routes - CSA

Customer Success Analyst (CSA) route:

- Support Role
- Focused on becoming a product master
- Heavy focus on understanding and learning the CMap product
- Relationship building
- Focused on delivering a world class experience for our customers
- Ideal for problem solver type individuals, who like to work as a team and contribute to shared success



Our Culture

Here at CMap, we put our people first because we believe that everyone shines brightest when they can be their true selves at work. We're all about embracing diversity and creating a workplace where everyone feels valued and celebrated.

That's why we've rolled out some amazing initiatives to support your mental well-being. You'll find:

- [Mental Health First Aiders](#): Our team members are here to help if you need someone to talk to. 🤝
- [Help@Hand Wellness App](#): As part of your benefits, you and your family (yes, even your partner and kids!) get access to this 24/7 helpline, offering unlimited mental health consultations and a treasure trove of wellness resources.





Our Culture

At CMap, we're building a community that you can be proud to be a part of. Ready to join us? Your authentic self is exactly what we're looking for!

People Forum



The People Forum was made in 2023, to help push social, cultural, and charitable initiatives on behalf of the wider team. So far in 2024, we have celebrated Pride Month, supported in a range of activities for Mental Health week, hosted a Euros Sweepstake and much more!

Keen to see what we're up to, follow us on Instagram:

 **cmapsoftware**

